

# RK-JK-HC02 LED Headlight

Installation Manual — Fits Jeep Wrangler, Harley-Davidson, Hummer & Defender



**BEFORE YOU START** Park on level ground, turn off the ignition, disconnect the negative battery terminal, and let components cool before installation.

## Safety Information

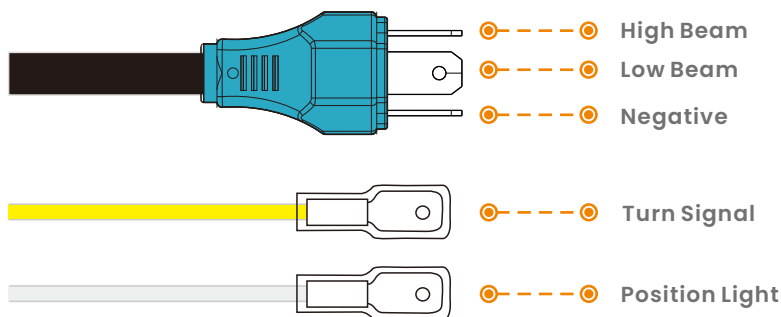
- Park the vehicle on a level surface and engage the parking brake.
- Turn off the ignition and remove the key before installation.
- Disconnect the negative battery terminal to prevent electrical short circuits.
- Please wait until the bulbs and housings have completely cooled before handling them.

## Tools Required

- Socket wrench set
- Phillips and flathead screwdrivers
- Trim removal tool
- Pliers (optional)
- Torque wrench

## Wiring Diagram

Match each wire by function. Secure every connection before testing the vehicle lights.



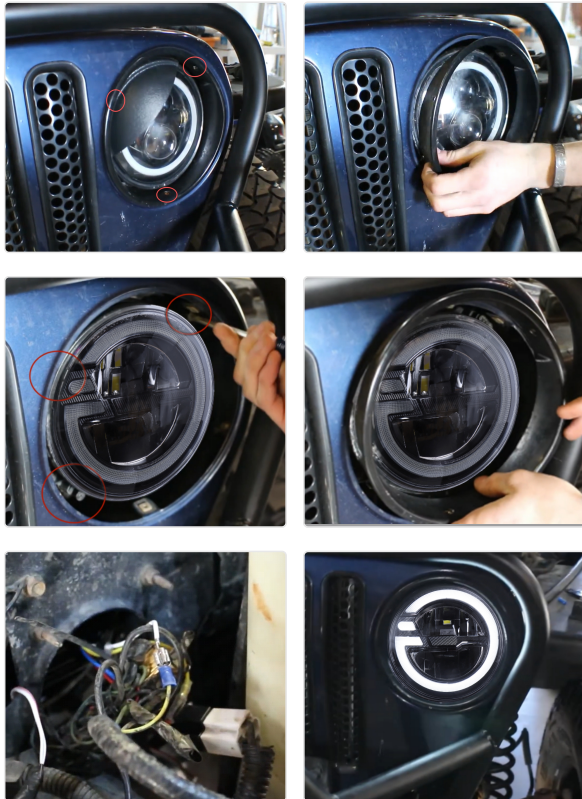
## **Adapter Harness**

Connects the factory vehicle connector to the light assembly for plug-and-play installation.



# HOW TO INSTALL

Note: This step does not apply to motorcycle installations.



1

Remove the screws (there may be three or four, depending on the vehicle model) securing the headlight retaining ring. Carefully pull out the factory headlight assembly. Disconnect the factory wiring connector from the back of the headlight.

2

Place the new headlight into the housing. Reinstall the retaining ring and tighten the screws securely.

3

Open the hood. Connect the turn signal wire to the factory turn signal light below the headlight. Connect the position light wire to ACC or parking light power. Secure all connections and test all functions. Adjust the beam if necessary.  
**Note:** Wiring configuration may vary slightly depending on vehicle.

## FITMENT

- 1997-2006 Jeep Wrangler TJ 2-Door
- 2004-2006 For Jeep Wrangler LJ unlimited
- 2007-2016 Jeep Wrangler JK 2 Door
- 1994-2013 Harley-Davidson Touring Models
- 2012-2013 Harley-Davidson FLD...

Visit [4x4rockcats.com](http://4x4rockcats.com) for the complete fitment list.

## PRODUCT WARNINGS

Use only with 12 V DC input. The light may become hot during continuous use. Avoid burns and allow cooling before service.

## QUICK TROUBLESHOOTING

Issue: Flickering/intermittent light - check ground and plug connection.  
Issue: No illumination - confirm 12 V input and battery connection.

**THANK YOU FOR CHOOSING  
4x4 ROCKCATS!**

support@4x4rockcats.com  
RK-JK-HC02 Installation Guide | Page 2

